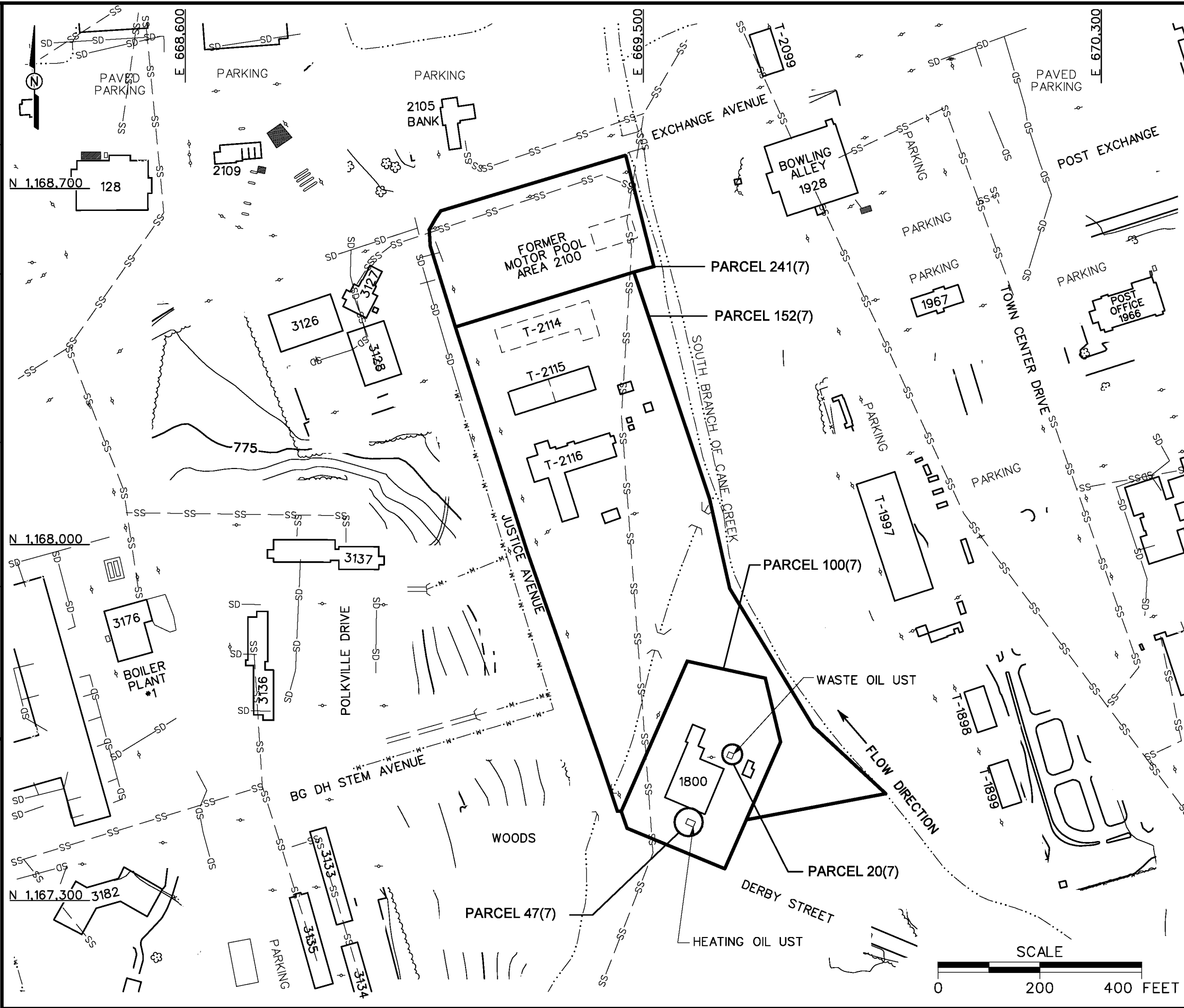


DBILLING
c:\cadd\design\774645es.345
05/31/01 11:27:50 AM
STARTING DATE: 06/27/99
DRAWN BY: D. BILLINGSLEY
DATE LAST REV.:
ENGR. CHK. BY: J. DENDY
DRAFT. CHK. BY:
INITIATOR: J. DENDY
PROJ. MGR.: J. YACOB
PROJ. NO.: 774645
DWG. NO.: 774645es.345



LEGEND

- UNIMPROVED ROADS AND PARKING
- PAVED ROADS AND PARKING
- BUILDING
- FORMER BUILDING LOCATION
- TOPOGRAPHIC CONTOURS (CONTOUR INTERVAL - 5 FOOT)
- TREES / TREELINE
- PARCEL BOUNDARY
- SURFACE DRAINAGE / CREEK
- MANMADE SURFACE DRAINAGE FEATURE
- FENCE
- UTILITY POLE
- SANITARY SEWER LINE
- STORM DRAINAGE LINE

FIGURE 1-2
SITE MAP
AUTOCRAFT SHOP/FORMER DPDO
AND FORMER MOTOR POOL AREA
2100 NORTH OF DPDO
PARCELS 100(7), 20(7), 47(7),
152(7), AND 241(7)

U. S. ARMY CORPS OF ENGINEERS
MOBILE DISTRICT
FORT McCLELLAN
CALHOUN COUNTY, ALABAMA
Contract No. DACA21-96-D-0018